

PRORACK



AVAILABLE
JUNE 2014

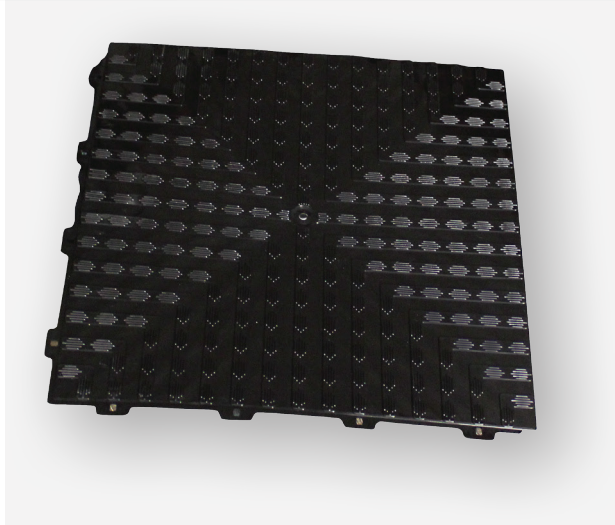
FEATURES

- Heavy duty reinforced steel grid shelf
- Modular & expandable system
- Supports up to 800 lbs powder coated baked paint
- Easy to install and maintain
- High-load bearing steel for years of durability
- S hooks support up to 50 lbs

PROSLAT

PROTILE

AVAILABLE
JULY 2014



FEATURES

- Patent-pending cross weave design
- Raised surface for increased safety in wet conditions
- Non-slip ultra grip ribs
- Unique seamless look from tile to tile
- Easy to clean
- Resists most chemicals and petroleum products
- UV resistant
- Free flow drainage system
- Low profile design eliminates the need for edge trims

COLORS



Lime



Orange



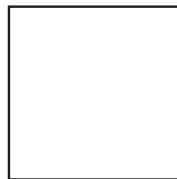
Red



Silver



Blue



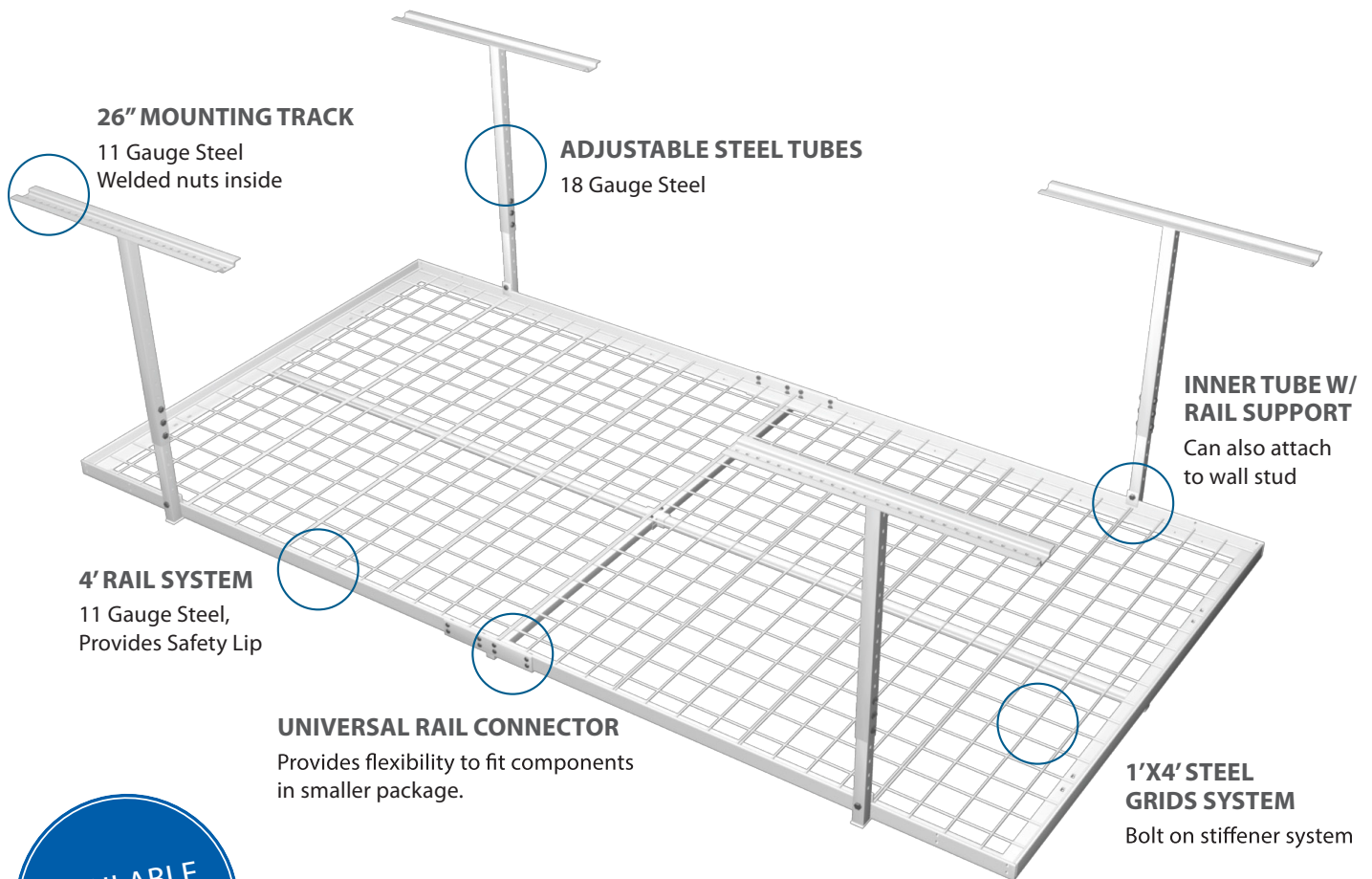
White



Black

PROSLAT

CEILING STORAGE SYSTEM



AVAILABLE
AUG 2014

SMALLEST PACKAGED
4' x 8' System



FEATURES

- 4'x8' 600 lbs CAPACITY SYSTEM
- Unit weight 84 lbs
- Storage space from ceiling 23" – 36"
- Bottom of rack clearance 23 ^{3/8}" – 36 ^{3/8}"
- Tubes can be cut down
- Color box size L: 51" x W: 13" x H: 5"
- 14 units per pallet
- Fits in one box

PROSLAT

PROLIFT



AVAILABLE
AUG 2014

Bikes are always the biggest challenge in the garage; they clutter the floor or worse fall on your car.

Our new ProLift solves this problem. With our system you can hang four bikes in one bike space. No heavy lifting overhead on ceiling mounts, no need for step ladders. So easy and safe, even kids can operate it. Just flip the switch and get the bikes off the floor & out of the way.

FEATURES:

- Height: 7'
- Capacity: 4 bikes
- Holds up to 200 lbs
- Easy to install and use
- Holds for 4 bikes, in the space of 1
- Mounts at any height for ease of use
- Clips into Proslat wall or mounts to regular wall
- Plugs into a regular outlet 110 volt (6 foot cord included)
- Rubber coated arms won't damage your bicycles
- Powder coated finish for durability
- Includes nylon straps for all frame types

PROSLAT